

# HEIGHT SAFETY EQUIPMENT

WORKING AT HEIGHT PRODUCT PORTFOLIO

---



---

# HEIGHT SAFETY PRODUCTS

Columbus McKinnon believes in total commitment to safety awareness, resulting in a better working environment. We are dedicated to understanding customer needs at all levels and offer a wide range of equipment designed with exact end-user requirements.

Our comprehensive range of Yale safety products are manufactured under ISO9002 accreditation and meets all relevant UKCA and European CE standards.

Today, working at height, no longer means above 2 metres before PPE is required. The new regulations state "Where a person could fall a distance liable to cause personal injury."

To ensure the safety of your team make sure you have done the following:

- Method statement
- Risk assessment

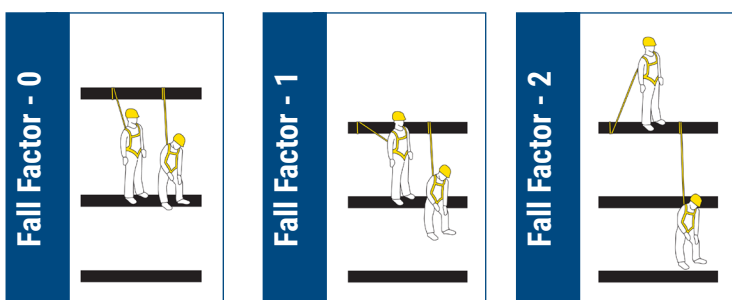
## Always

- Have a rescue plan in place. Do NOT rely on the Emergency Services.
- Train people in the use of Fall Protection Equipment.
- Inspect your Fall Protection Equipment and keep records of inspections.

Our sales team can offer advice on which products will best meet your working at height needs as well as provide instruction on the correct usage of our equipment. Our team of qualified service engineers can provide regular inspections to ensure your equipment is safe for use. To learn more, contact us at [sales.ni@cmco.eu](mailto:sales.ni@cmco.eu).

---

## FALL FACTORS



Best option

Acceptable

Worst case

### Calculating the potential fall distance:

- Twice the length of the lanyard to allow for the length of the lanyard and the height of the worker.
- +1.75 metre deceleration distance to allow for elongation of the shock absorber and any give in the lanyard.
- +1 metre safety margin.
- TOTAL = 6.75 metre clearance required using a 2 metre lanyard.





# HEIGHT SAFETY KITS

Each kit is comprised of components to maximize safety in unique working environments



## RESTRAINT KIT - MODEL CMHYP01

- 1 x Single point harness
- 1 x 2 metre restraint rope lanyard
- 2 x Screw gate snap hooks
- 1 x Kit Bag

NOTE: This kit is for Restraint only! Not to be used for fall arrest.



## CONSTRUCTION KIT - MODEL CMHYP04

- 1 x Two point harness
- 1 x 2.2 metre webbing retractor
- 1 x 800mm anchor sling
- 1 x Kit bag



## BASIC KIT - MODEL CMHYP02

- 1 x Single point harness
- 1 x 2 metre shock absorbing rope lanyard
- 2 x Screw gate snap hooks
- 1 x Kit bag



## CRANE MAINTENANCE KIT - MODEL CMHYP06

- 1 x Two point harness
- 1 x 2 metre twin tail shock absorbing web lanyard
- 2 x Scaffold hooks
- 1 x Screw gate snap hook
- 1 x Kit bag

# HEIGHT SAFETY KITS



## SCAFFOLDERS KIT - MODEL CMHYP03

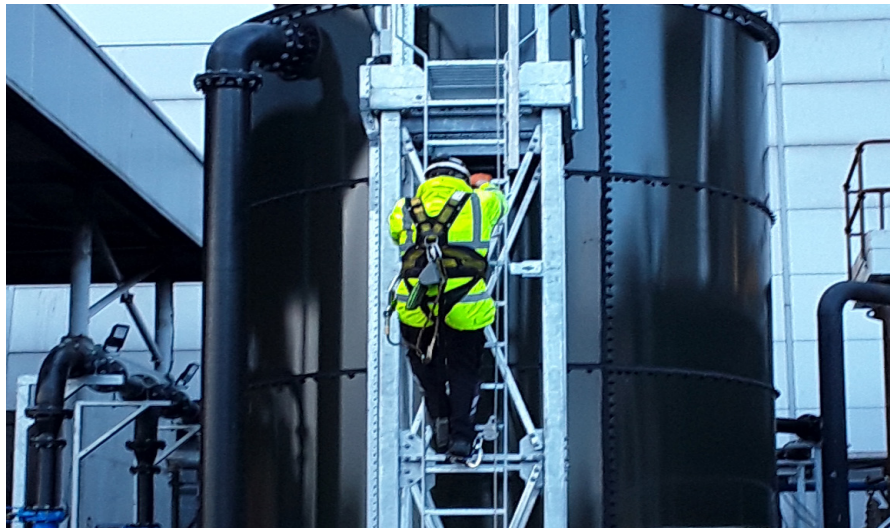
- 1 x Single point harness
- 1 x 2 metre shock absorbing rope lanyard
- 1 x Screw gate snap hook
- 1 x Scaffold hook
- 1 x Kit bag

## WORK POSITIONING KIT - MODEL CMHYP08

- 1 x Four point harness
- 1 x 2 metre work positioning device
- 1 x 2.2 metre webbing retractor
- 1 x Kit bag

Our team of service engineers regularly use our height safety equipment when working at height. They can advise the correct use of the products and best option for various working environments.

If you are unsure which kit is most suitable to meet your working at height needs, contact our sales team for advice.



Telephone: +44 (0) 2890 840697



Email: [sales.ni@cmco.eu](mailto:sales.ni@cmco.eu)



Inspection Reminder

Height safety inspection is required every six months. To book your equipment in for inspection, contact our service co-ordinator: [vicki.carson@cmco.eu](mailto:vicki.carson@cmco.eu).

---

# HARNESSES

## SINGLE POINT HARNESS

**Model: CMHYP10**

- Article number: N37020010
- Single point full body, entry level harness, with rear 'D' attachment point. (Fits up to 48" chest)
- Conforms to BS EN361.

## EXTRA LARGE SINGLE POINT HARNESS

**Model: CMHYP10XXL**

- Article number: N4300007639
- Extra large single point full body harness, with rear 'D' attachment point. (Fits up to 55" chest size)
- Conforms to BS EN361.

## TWO POINT HARNESS

**Model: CMHYP35**

- Article number: N37020035
- Two point full body harness with front & rear 'D' attachment points.
- Conforms to BS EN361.

## EXTRA LARGE TWO POINT HARNESS

**Model: CMHYP35XXL**

- Article number: N4300008966
- Two point full body harness with front & rear 'D' attachment points. (Fits up to 55" chest size)
- Conforms to BS EN361.

## THREE POINT HARNESS

**Model: CMHYP20**

- Article number: N37020020
- Three point harness, with front 'D' and side 'D' attachment points.
- Conforms to BS EN361 & BS EN358.

## FOUR POINT QUICK CONNECT HARNESS

**Model: CMHYP56A**

- Article number: N37020005
- Four point harness complete with work positioning belt and quick connect buckles.
- Conforms to BS EN361 & BS EN358.

## RESCUE HARNESS

**Model: CMHYP10R**

- Article number: N37020011
- Harness with front & rear 'D' attachment points with the added rescue anchorage point.
- Conforms to BS EN361.

## RIGGERS HARNESS

**Model: CMHYP70**

- Article number: N37020070
- Five point full body harness.
- Conforms to BS EN361, BS EN358, and BS EN813.



CMHYP10

&

CMHYP10XXL



CMHYP35

&

CMHYP35XXL



CMHYP20



CMHYP56A



CMHYP10R



CMHYP70

# FALL ARREST LANYARDS



## ROPE LANYARDS

### Model: CMHABMLB121

- Article number: N4300006103
- 2 metre x 12mm rope lanyard complete with 2 screw gate connectors.

### Model: CMHABMLB121S

- Article number: N4300006104
- 1.5 metre x 12mm rope lanyard complete with 2 screw gate connectors.

### Model: CMHABMLB121scaff

- Article number: N4300006105
- 2 metre x 12mm rope lanyard complete with 1 scaffold hook and 1 screw gate connector.

### Model: CMHABMLB121Sscaff

- Article number: N4300006106
- 1.5 metre x 12mm rope lanyard complete with 1 scaffold hook and 1 screw gate connector.

### Model CMHABMLB102scaff

- Article number: N4300006108
- 2 metre x 12mm twin tail rope lanyard complete with 2 scaffold hooks and 1 screw gate connector.

### Model CMHABMLB100-20

- Article number: N4300008280
- 2 metre x 12mm adjustable lanyard complete with 2 screw gate connectors.

### Rope Lanyard

CMHABMLB121scaff



### Restraint Lanyard

CMHLB121-20



\*All rope lanyards conform to BS EN354 & BS EN355

## RESTRAINT LANYARDS

### Model: CMHLB100-20

- Article number: N4300012503
- 2 metre x 12mm adjustable restraint lanyard complete with 2 screw gate snap hooks.

### Model: CMHLB100-20scaff

- Article number: N4300008410
- 2 metre x 12mm adjustable restraint lanyard complete with 1 scaffold hook and 1 screw gate snap hook.

### Model: CMHLB121-10

- Article number: N4300006134
- 1 metre x 12mm restraint lanyard complete with 2 screw gate snap hooks.

### Model: CMHLB121-15

- Article number: N4300006133
- 1.5 metre x 12mm restraint lanyard complete with 2 screw gate snap hooks.

### Model: CMHLB121-20

- Article number: N37220024
- 2 metre x 12mm restraint rope lanyard complete with 2 screw gate snap hooks.

\*All restraint lanyards conform to BS EN354

---

# FALL ARREST LANYARDS

## WEBBING LANYARDS

### Model: CMHABMT

- Article number: N3722026
- 2 metre webbing lanyard complete with 2 screw gate connectors.

### Model: CMHABMTS

- Article number: N4300006111
- 1.5 metre webbing lanyard complete with 2 screw gate connectors.

### Model: CMHABMTscaff

- Article number: N37220028
- 2 metre webbing lanyard complete with 1 scaffold hook and 1 screw gate connector.

### Model: CMHABMTSscaff

- Article number: N4300006112
- 1.5 metre webbing lanyard complete with 1 scaffold hook and 1 screw gate connector.

### Model: CMHABM2Tscaff

- Article number: N4300006101
- 2 metre twin tail webbing lanyard complete with 2 scaffold hooks and 1 screw gate connector.



\* All webbing lanyards conform to BS EN354 & BS EN355

---

# FALL ARREST BLOCKS

## WEBBING BLOCKS

### Model: CMHWR100-06

- Article number: N4300013778
- 6 metre fall arrest block with 17mm wide webbing polyester - Kevlar fibres.
- Fitted as standard with fall indicator in connector.
- Protection of 1 person
- Unit weight 1.8kg

### Model: CMHAH210

- Article number: N37320035
- 2.25 metre mini retractor with 45mm wide webbing.
- Fitted as standard with fall indicator in connector.
- WLL 140kg
- Unit weight 1.2kg





# FALL ARREST BLOCKS



## CABLE BLOCKS 6 - 15 METRE

### Model: CMHCR250v06-2

- Article number: 192066967
- 6 metre fall arrest block with 4 mm diameter cable.
- Fitted as standard with fall indicator in connector.
- WLL 140kg.
- Unit weight 4kg.

### Model: CMHCR250v10-2

- 10 metre fall arrest block with 4 mm diameter cable.
- Fitted as standard with fall indicator in connector.
- WLL 140kg.
- Unit weight 4.2kg.

### Model: CMHCR250v12-2

- Article number: 192066972
- 12 metre fall arrest block with 4 mm diameter cable.
- Fitted as standard with fall indicator in connector.
- WLL 140kg.
- Unit weight 4.7kg.

### Model: CMHCR250v15-2

- Article number: 192066973
- 15 metre fall arrest block with 4 mm diameter cable.
- Fitted as standard with fall indicator in connector.
- WLL 140kg.
- Unit weight 4.9kg.



CMHCR250v

## RETRIEVAL BLOCK 25 METRE

### Model: CMHCRW30025

- Article number: 192040308
- 25 metre fall arrest/retrieval block for fall arrest and rescue with 4.7mm diameter galvanised steel cable.
- Maximum rated load 100kg.
- Minimum rated load 50kg.
- For lifting and lowering personnel only.
- Conforms to BS EN360, BS EN1496 Class B.



CMHCRW300

---

# TRIPODS

## TRIPOD - 1.75 METRE CLOSED HEIGHT

### Model: CMHTM9

- Article number: N37320039
- Personnel tripod complete for lifting and lowering.
- Maximum 1 user.
- Height to underside 1340 - 2300mm.
- Footprint diameter 1.66 - 2.36mtr.
- Weight 17kg.
- Conforms to BS EN795

### Model: CMHTM9-CONNECT

- Article number: 192063945
- To use as a material tripod you need to replace the connector with this 500kg WLL connector.
- Unit weight 1.7kg.
- Conforms to BS EN360.



---

# WINCHES

## 20 METRE WINCH

### Model: 20m winch

- Article number: N37320040
- 20 metre winches with automatic brake complete with mounting bracket, cable diameter 6.3mm.
- WLL of 140kg.
- Net weight 13kg.
- Conform to BS EN1496

### Model: Replacement 20m rope

- Article number: 192028082
- Replacement 20mtr x 6.3mm cable to suit N37320040 winch.

## 25 METRE WINCH

### Model: 25m winch

- Article number: N37320045
- 25 metre winches with automatic brake complete with mounting bracket, cable diameter 6.3mm.
- WLL of 140kg.
- Net weight 13kg.
- Conform to BS EN1496

### Model: Replacement 25m rope

- Article number: 192028082
- Replacement 25mtr x 6.3mm cable to suit N37320045 winch.



# WORK POSITIONING



## 2 METRE WORK POSITIONING

**Model: CMHAF130-02**

- Article number: N37220029
- 2 metre work positioning device complete with shortener.
- Conforms to BS EN358.

## 4 METRE WORK POSITIONING

**Model: CMHAF130-04**

- Article number: N37220030
- 4 metre work positioning device complete with shortener.
- Conforms to BS EN358.



# ACCESSORIES

## PULLEY

**Model: CMHPL101**

- Article number: 192057500
- Pulley to operate with tripod and winch.

## STEEL SNAP HOOK

**Model: CMHAZ011**

- Article number: N4300006118
- Steel snap hook 18mm screw gate.
- Conforms to BS EN362.

## STEEL SNAP HOOK WITH TWIST LOCK

**Model: CMHAZ011t**

- Article number: N4300006119
- Steel snap hook 18mm twist lock.
- Conforms to BS EN362.

## LIGHT ALLOY SNAP HOOK

**Model: CMHAZ023**

- Article number: N4300008257
- Light alloy snap hook 60mm
- Conforms to BS EN362.

## WEBBING ANCHOR SLING

**Model: CMHAZ90080**

- Article number: N4300006129
- 800mm webbing anchor sling.
- Conforms to BS EN795.

## RUCK SACK

**Model: CMHAXBP**

- Article number: N37520001
- Ruck sack used in the height safety kits.

## TRAUMA STRAP

**Model: CMHAY201**

- Article number: N4300006933
- Trauma strap with 1200mm working length.

## MOUNTING BRACKET

**Model: CMHAT171**

- Article number: 192029102
- Mounting bracket to fit retrieval block to CMHTM9 tripod.

CMHAZ900080



CMHAT171

CMHPL101



CMHAXBP



CMHAZ023



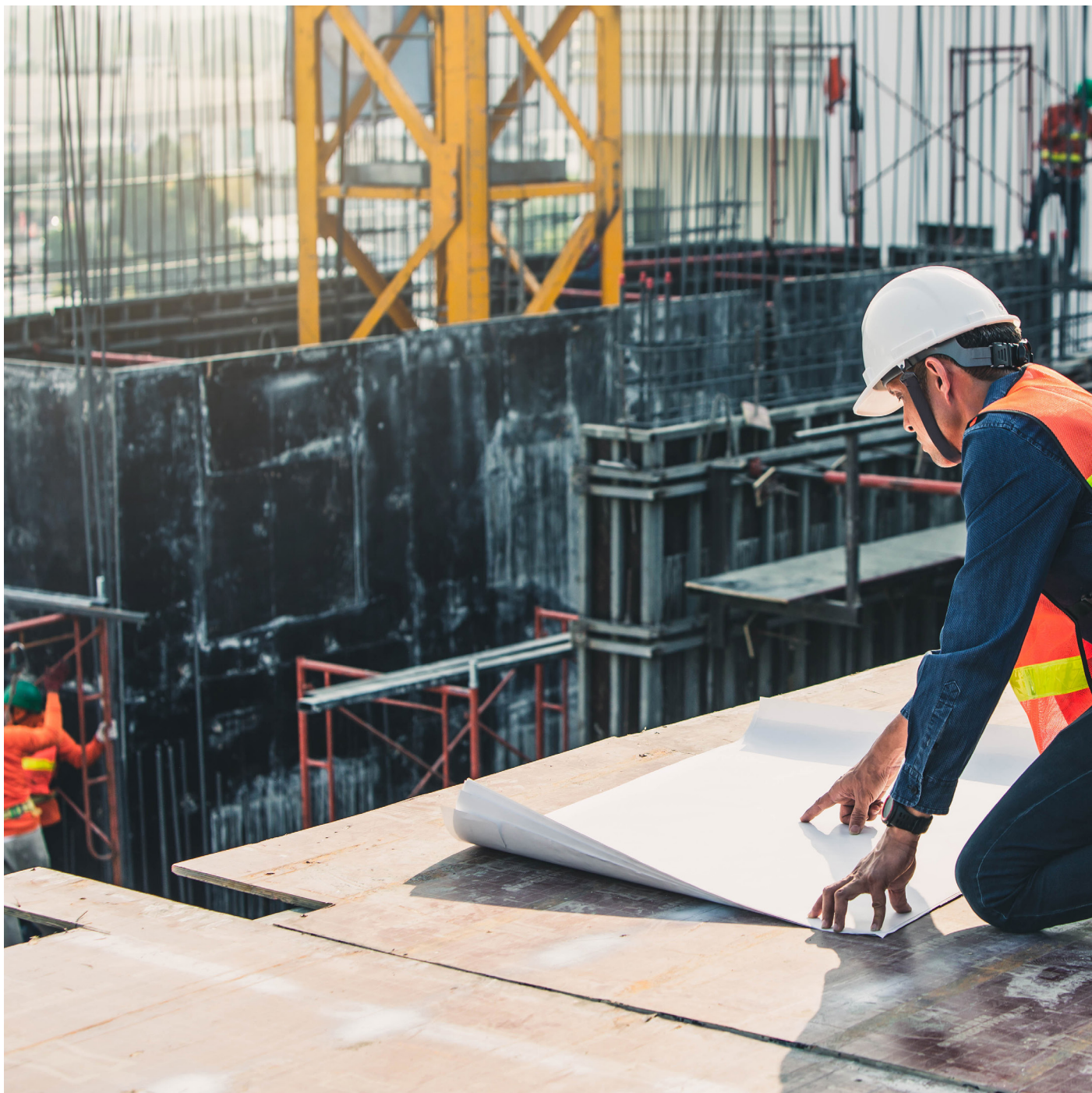
CMHAZ011



CMHAY201







**Columbus McKinnon** Unit1A Ferguson Centre | 57-59 Manse Road | Newtownabbey | BT36 6RW  
Tel +44 (0) 1244 375375 | [sales.ni@cmco.eu](mailto:sales.ni@cmco.eu) | [www.columbusmckinnon.ie/ni](http://www.columbusmckinnon.ie/ni)